

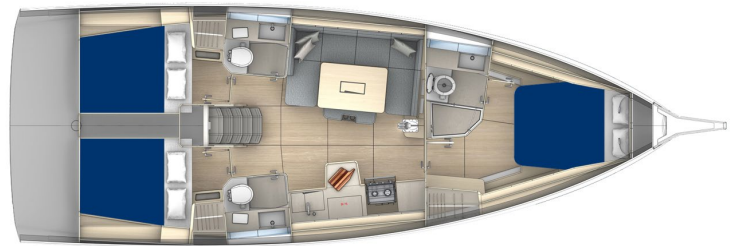


## Sunsail 41.3

3 Cabins / 3 Heads

### Specifications and Equipment List (Sunsail charter upgrades in bold)

Length Overall:	41ft 9in   12.75m
Waterline Length:	36ft 8in   11.20m
Beam:	14ft 1in   4.30m
Draft:	5ft 8in   1.75m
Fuel Capacity:	66 US Gal   250 L
Water Capacity:	66 US Gal   430 L
Engine:	<b>Yanmar 45 HP</b>



### CONSTRUCTION

- Hull: Infused polyester/glassfibre
- Gelcoat: NPG Gelcoat with first layer impregnated with vynilester resin forming an optimum barrier against osmosis
- Structure: Inner moulded hull bottom, structural framing laminated to the hull
- Deck: Sandwich with injected core
- Ballast: Keel bolts bear on stainless back-plates
- Rudder: Semi-elliptical shape, filled with closed-cell epoxy foam
- Rudder stock: Solid stainless steel
- Non-slip deck surface: Diamond point non skid profile on deck
- **Decoration: Sunsail graphics**
- **Shallow cast iron keel**

### DECK

- Hand rails: on cabin roof
- Anchor locker: Self-draining with anchor chain eyebolt
- Bow pulpits: Stainless, opened for easy access
- Stern pulpit: Lifeboy bracket and opening life-lines with hook
- Stanchions: With 2 rows of life-lines
- **Fixed bowsprit**
- **Stainless steel bow protection**
- **Lifeline gates and fender step**

### DECK FITTINGS

- Shroud chainplates: Outboard deck side shroud chainplates
- **Stainless steel cleats**
- Mooring line protection: 6 stainless steel plates, on hull sheerline
- Fuel deck fillers: 1
- Water deck fillers: 1
- **Rigid boom vang**
- Deck organizers: 4-sheave deck organizer for halyard, sheet, and reef line returns : 1 portside and 1 at starbord
- Cleats: 2x4 jamcleats port side and starboard side of the companionway
- Furler line jamcleats: 1 at aft end of sidedeck
- **1 electric halyard winch and 1 standard reefing line winch**
- **2 electric sheet winches**
- **Reefing line system leads back to the roof**

- **Stainless steel anchor and galvanized chain**
- **Stainless steel exhaust**
- **Plastic dorade under hinding piece halyard**

## COCKPIT

- Lockers: 2 large side lockers on starboard and portside with lockeds
- **Helm: Twin helm position with stainless steel wheels**
- Helm console: Polyester POD and aluminium columns
- Engine control: Engine controls on side of cockpit and control panel on pod
- Compass: 1 compass on port helm position
- Instrumentation: On starboard and portside helm
- Gas locker: locker aft, to port
- BIB locker: Locker in transom
- Shore supply: Portside
- Bathing ladder: Foldaway stainless steel bathing ladder
- Cockpit floor: Non-slip polyester cockpit floor
- Emergency tiller: Head of rudder stock beneath helmsman's floor for fitting the emergency tiller
- **Cockpit table**
- **Bimini and dodger**
- **Starboard and Portside helm console instrument support pods**
- **Cockpit shower (cold/hot)**
- **Aft bathing platform**
- **Transom protection**
- **2 Backrest inflatable helm seats**
- **Cockpit cushions (seat and backrest)**
- **Helmsman seat upholstery**
- **Teak on seats & platform**
- **Plancha gas and sink**
- **Cockpit portlight in aft starboard cabin**
- **Cockpit portlight in aft port side cabin**
- **Outboard crane and bracket**

## RIGGING & SAILS

- Mast: Anodized aluminium with 2 levels of swept spreaders
- Mast stepping: On deck
- Lights: 3-colour masthead light + anchor light + steaming light
- Topping lift: Boom topping lift cleat
- Boom: Anodized aluminium fitted with 2 continuous reefers
- Standing rigging: Continuous in stainless single-strand cable,chrome-plated bronze rigging screws, comprising: forestay,inter. and lower shrouds
- Backstay
- Running rigging: Running rigging in pre-stretched textileincluding: main and genoa halyards, boom topping lift, mainand genoa shee 2 continuous reef lines, leech tensioner, furling line, downhaul tackle
- **Custom heavy duty battened charter mainsail**
- **Charter upgrade, heavy duty furling genoa with UV protection strips**
- **Stackpack LazyJack system in Sunsail blue with logo**
- **Proful genoa furler**
- **Mainsail bridle on coachroof**

## INTERIOR

- Woodwork: Real wood veneer in oak or teak, solid matching
- Floors: laminated
- Doors: cabin doors can be blocked in the open position
- Mattresses: Mattresses are in quilted
- Cushions: Saloon cushions and cabin mattresses fitted withremovable covers

## Exhibit A

- Head-liner: Soft grey painted head-liner
- **Signature ambiance**
- **Grey faux-leather upholstery**

### GLAZING & LIGHTING

- Hull: 10 hull windows
- Side Coachroof: 6 fixed ports and 2 openable
- Coachroof hatches: 1 size 44 and 4 size 10 Lewmar hatches with curtains
- 1 fixed porthole on the roof
- Lighting: Numerous spots and reading lights
- **Blinds with mosquito net on deck hatches**
- **LED interior lights**

### COMPANIONWAY

- Steps: Wide steps
- Companionway hatch: Sliding companionway hatch and door in Plexiglas with stops and lock
- Engine cover: Hinged wooden engine cover with 2 gas struts
- Hand rails: 2
- Wine cellar
- **Custom companionway door**

### FORWARD CABIN

- 1 double bed
- Mattress: 14 cm thick foam mattress with washable cover
- Stowage:
  - Below berth
  - 1 hanging locker with shelf
- Upholstery headboard
- Reading lights + indirect lighting
- Access: To sounding and speed transducers
- Access to windglass
- **Mattress cover**

### FORWARD HEAD

- Wash-basin: synthetic resin
- Water: Hot and cold water
- Large mirror
- Grating
- Ventilation: Via deck panel
- Cupboards: Storage unit
- **1 Electric toilet**
- **Automatic shower pump**

### 2 AFT HEADS

- Wash-basin: Basin unit with tap
- Water: Hot and cold water
- Large mirror
- Ventilation: Via deck panel or opening port
- **1 Electric toilet**
- **Automatic shower pump**

### SALOON

- Living room bench: Large seats
- **Saloon table convertible into berth**
- Storage under seats and behind backrests

## Exhibit A

- Mast foot

### GALLEY

- Worktop: Wooden fiddle
- Sink: Stainless twin-bowl sink with covers in synthetic resin
- Water: Hot and cold pumped water brass single-lever mixer tap
- Gas cooker: 2-burner gas cooker with oven on gimbals, with stainless rail
- Crockery storage: Dowels to retain crockery when heeling
- Cooler compressor 12V
- Refrigerator access: Via the worktop
- Stowage:
  - 2 closed cubby-holes
  - Below sink
  - Under floor
- Waste bin: Sort compartments
- Other: Light and ventilation ensured by opening port-lights and led banners over galley
- **Microwave**
- **Additional galley storage**

### AFT CABINS

- 1 double bed on port and starboard
- Mattress: 12 cm thick foam mattress with washable cover
- Fuel tank: Beneath starboard
- Water tank: Beneath port berth
- Stowage: Hanging locker
- Soundproofing: Double bulkhead provides acoustic and thermal insulation from adjoining engine compartment
- Technical area: Battery isolators on side of berth
- **Mattress cover**

### ENGINE

- **Engine: Yanmar 45 HP**
- Transmission: Sail-drive
- Cooling system: Heat exchanger, anti-siphon valve
- Tank: Gauge on electrical distribution panel
- Fuel filter: Fuel filter with water separator
- Shut-off valve: Emergency fuel shut-off valve
- Control panel: Control panel close to helmsman, with hour meter and tachometer
- Alternator: Alternator with battery isolator
- Ventilation: Ventilation with 1 natural inlet and electric mechanical extract
- Bilge: Independent engine bilge
- Access: Access to the engine from front and both sides
- **Propeller: 3-blade propeller, fixed**
- Insulation: Carefully-designed foam acoustic and thermal insulation

### PLUMBING

- Water tanks: 1 polyethylene water tank with inspection holes and gauges
- Electric bilge pump: With strainer, controlled from electrical distribution panel
- Manual bilge pump: Operated from cockpit
- Hot water tank: Pressurized water pump unit
- Shower waste: Shower waste pumped directly to the sea
- Other: Access to strainer via floor trap
- **Boiler**
- **Water purifier**
- **Watermaker**

## ELECTRICITY

- Circuit: 12 V
- Distribution panel
- Isolator: 1 per battery set in aft port cabin
- 3000W inverter
- **Shore power pack**
- **Increased battery capacity and AGM batteries in lieu of standard**
- **Battery charger**
- **LED navigation lights**
- **Electric windlass 2000W**
- **Full B&G electronic package**
- **Solar panels**
- **Stereo system with interior and exterior speakers**
- **Induction chargers in each cabin**
- **Generator**
- **Air conditioning**
- **TV**
- **AIS (transmitter/receiver)**

## GENERAL EQUIPMENT

- **Mooring / dock lines / fenders**
- **Safety pack**
- **Charter pack**
- **Commissioning and delivery to charter base**
- **Custom antifouling**

## NOTE

The Builder reserves the right to change or amend the contents of this document at any time without prior notification to any third party, and no liability will be accepted for errors contained within the same.